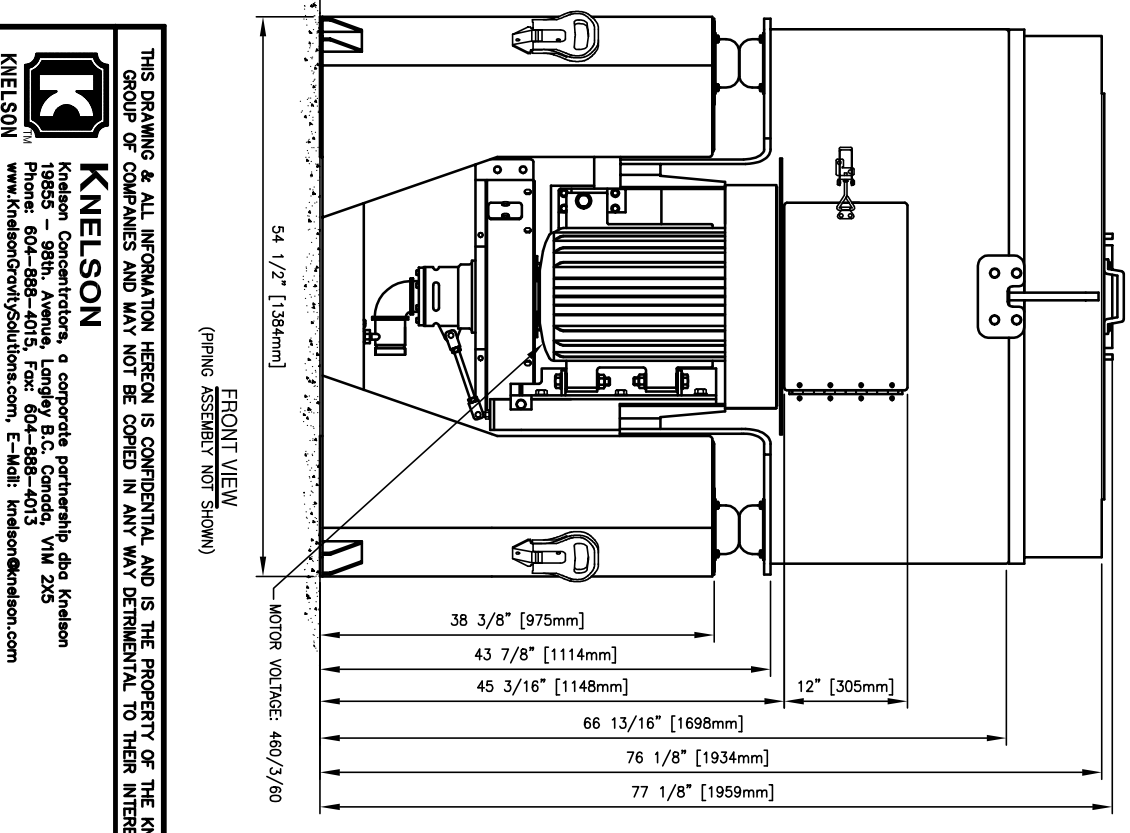
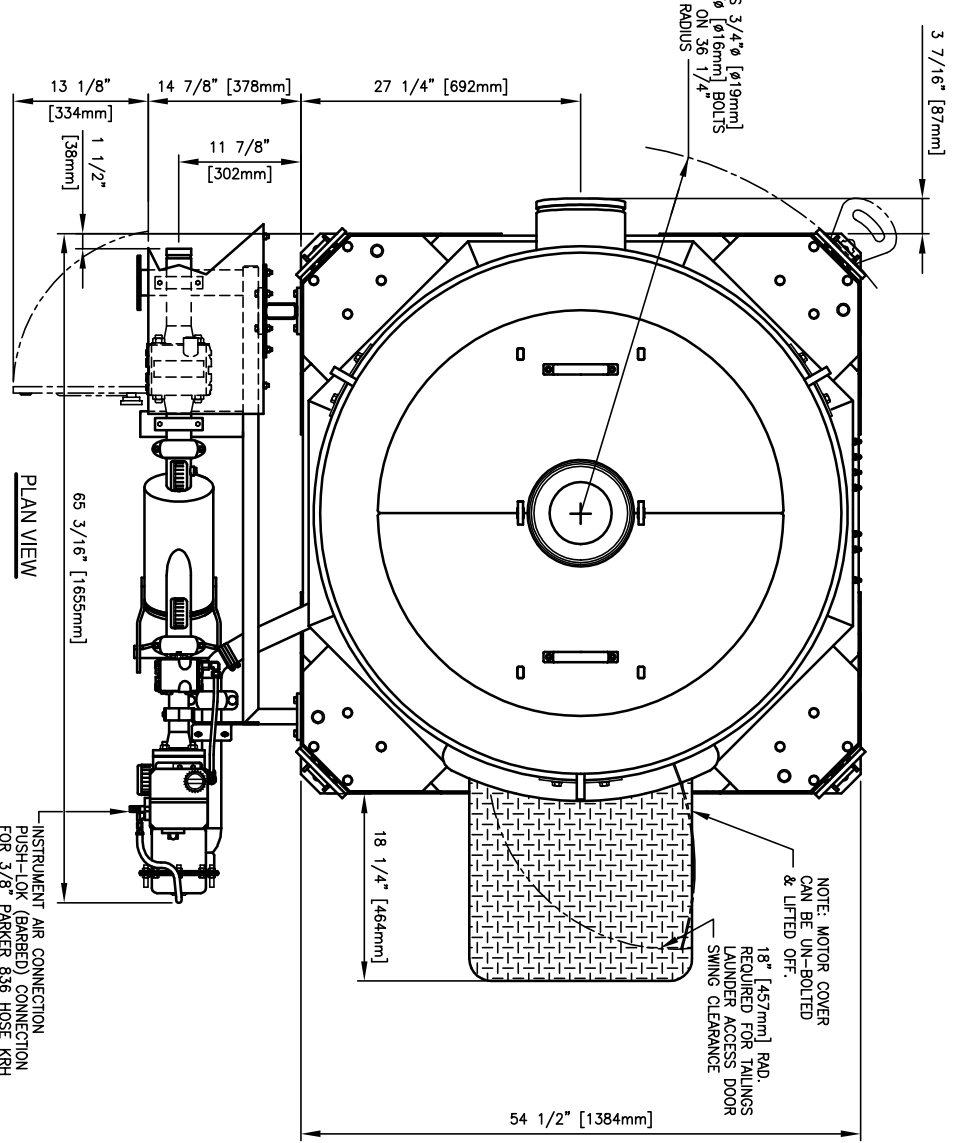
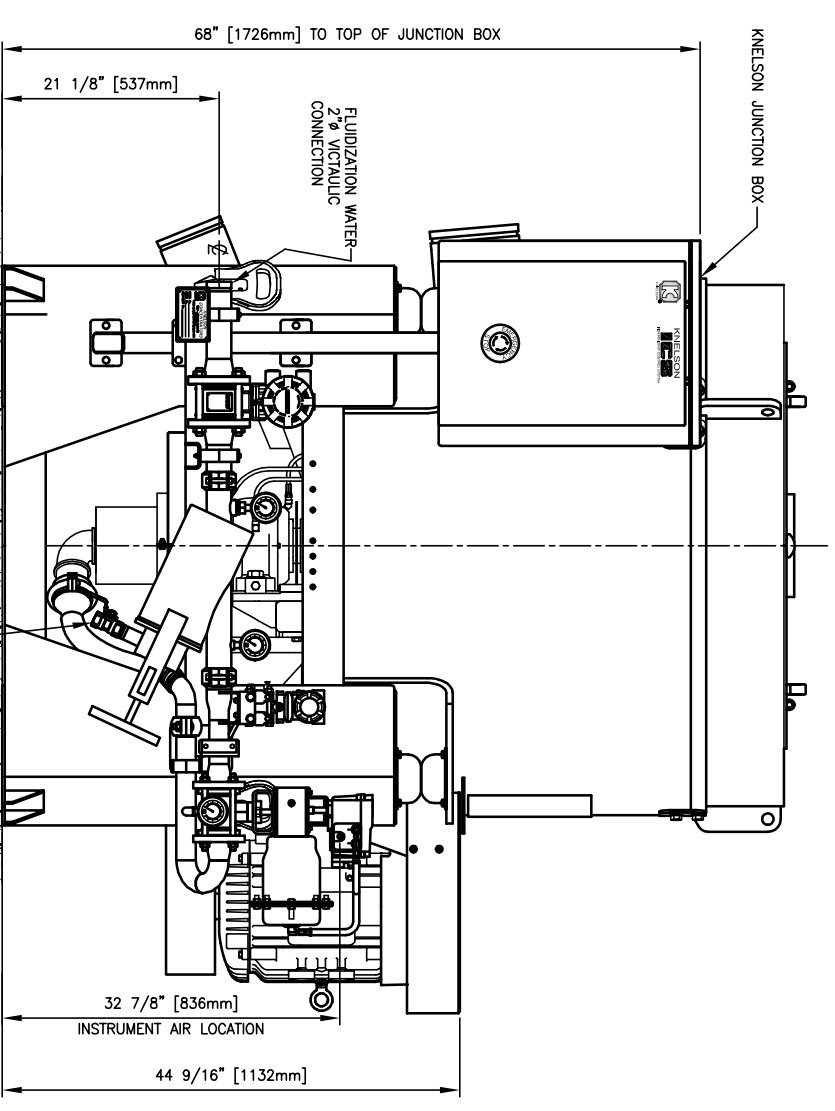
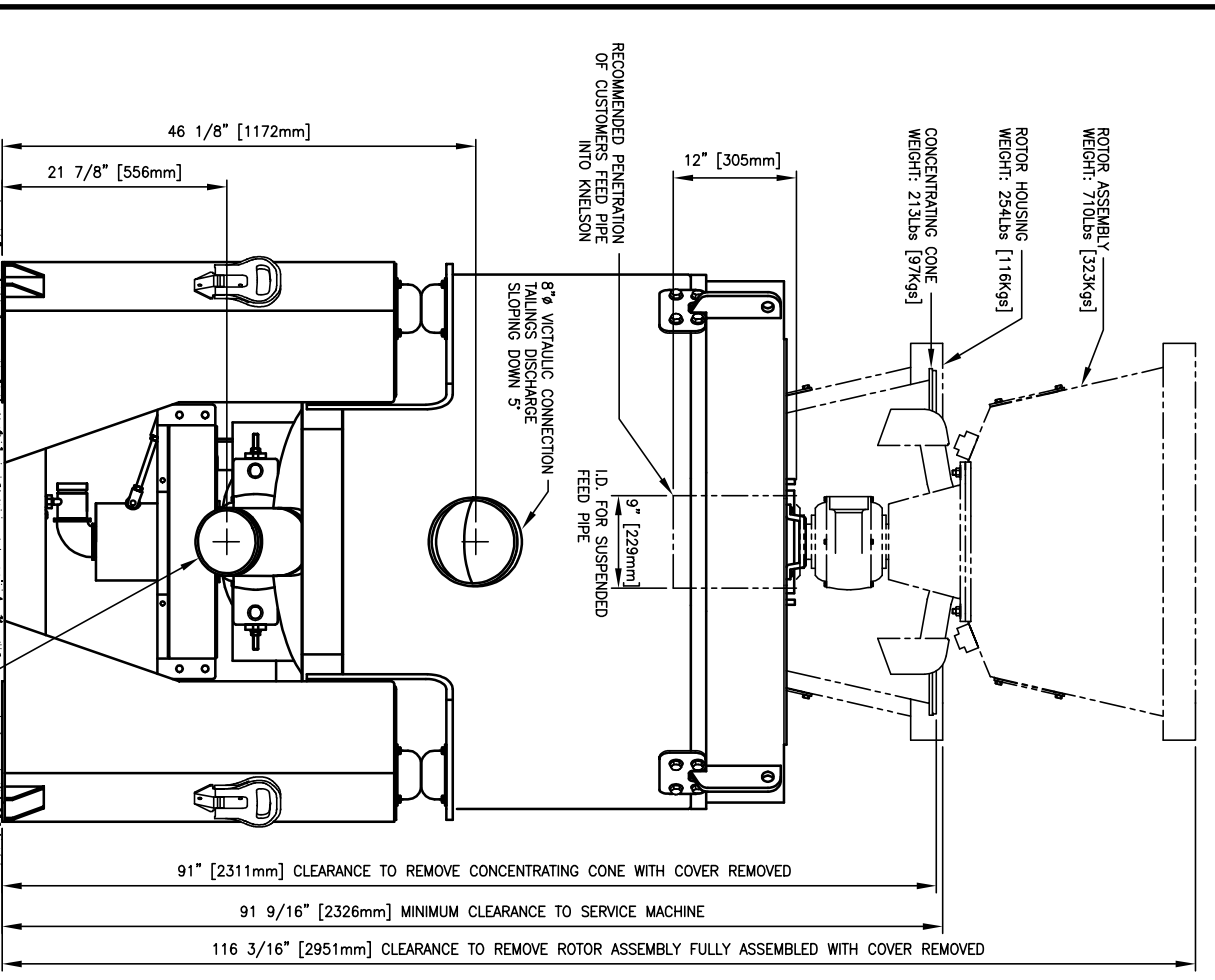
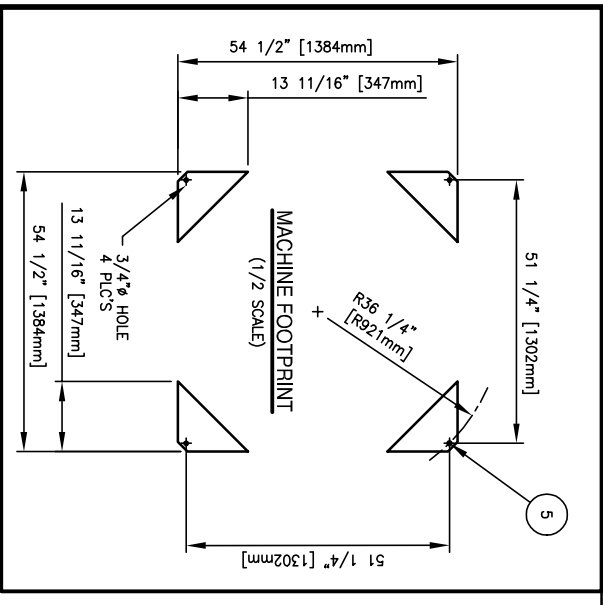
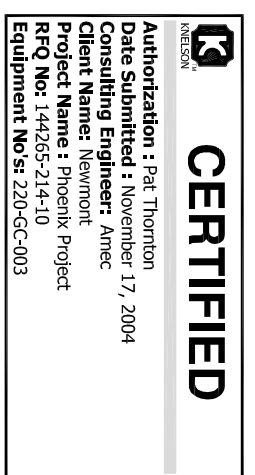


REV.	DATE	REVISION
A	07/16/04	UPDATED AS PER CUSTOMER'S ORDER
B	09/23/04	SHOW RIGHT HAND PIPING AND 3/8" NPT INSTRUMENT AIR CONNECTION



NOTE	DESCRIPTION	IMPERIAL	METRIC
1.	DRY WEIGHT OF CONCENTRATOR (FOR INSTALLATION)	3800 Lbs.	1724 Kg.
2.	OPERATING WEIGHT OF CONCENTRATOR	4500 Lbs.	2042 Kg.
3.*	MAXIMUM WEIGHT UNDER SANDED CONDITION BASED ON SOLID S/G. OF 2.7 (STATIC LOAD)	6100 Lbs.	2768 Kg.
4.*	MAXIMUM OPERATING LOAD AT EACH OF THE FOUR MOUNTING POINTS.	1325 ± 200 Lbs.	600 ± 91 Kg.
5.	FOUR 5/8" ANCHOR BOLTS REQUIRED TO INSTALL UNIT	TORQUE: 100 FT.-Lbs	TORQUE: 135 Nm.
6.*	SHEAR (HORIZONTAL) LOADS AT MOUNTING POINTS	± 200 Lbs.	± 91 Kg.
7.*	ROTOR SPEED(60-200G) (FREQUENCY OF FLUCTUATING LOADS)	VARIABLE: 410-725 RPM	
8.	ALL PIPING TO CONCENTRATOR FEED INLET, TAILINGS AND CONCENTRATE DISCHARGE PIPES SHOULD BE FLEXIBLE TO ALLOW FOR PROPER OSCILLATION OF UNIT'S UPPER FRAME.		
9.	ALL DIMENSIONS AND WEIGHTS ARE APPROXIMATE		

* LOADS ARE NON FACTORED AND ARE TO BE USED AS ACTUAL LOADS (CUSTOMER SHOULD REFER TO DESIGN CODE OR SPECIFICATION RELEVANT TO PARTICULAR PROJECT TO SELECT PROPER LOAD FACTORS AND/OR SAFETY FACTORS FOR FOUNDATION/STRUCTURE DESIGN)



TITLE: KC-XD30 GENERAL ARRANGEMENT **DWG. No.:** 03673-03 **REV.:** B

THIS DRAWING & ALL INFORMATION HEREON IS CONFIDENTIAL AND IS THE PROPERTY OF THE KNELSON GROUP OF COMPANIES AND MAY NOT BE COPIED IN ANY WAY DETRIMENTAL TO THEIR INTERESTS

KNELSON
Knelson Concentrators, a corporate partnership dba Knelson
19855 98th Avenue, Langley B.C., Canada V1M 2A5
Phone: 604-888-4013, Fax: 604-888-4013
www.knelson.com/solutions.com, E-Mail: knelson@knelson.com

KNELSON CONCENTRATOR MODEL KC-XD30 c/w
30HP, VG OPTION, AUTOMATION

DATE: June 2, 2004 **DWG. NO.:** 03673-03 **REV.:** B

DRG. BY: O. WIGLEY **PROJECT:** Phoenix Project

SCALE: NTS